



Item No. _____
 Project _____
 Quantity _____

BakerSeries Roll-in High Output Retarder Proofer

MODEL: LRPR3 - HO Series



Model LRPR3-30HO Shown (rack not included)

MODEL / RACK CAPACITY

Model / Depth	Side Load	End Load	Double
LRPR3-30HO	3 Racks	4 Racks	None
LRPR3-40HO	3 Racks	4 Racks	3 Racks
LRPR3-50HO	6 Racks	4 Racks	3 Racks
LRPR3-60HO	9 Racks	8 Racks	3 Racks
LRPR3-70HO	9 Racks	8 Racks	3 Racks
LRPR3-80HO	12 Racks	8 Racks	6 Racks
LRPR3-90HO	12 Racks	12 Racks	6 Racks
LRPR3-100HO	15 Racks	12 Racks	6 Racks
LRPR3-110HO	15 racks	16 Racks	6 Racks
LRPR3-120HO	14 Racks	16 Racks	9 Racks

Short Bid Specification:

Proofer Retarder shall be an **LBC Bakery Equipment Model LRPR3-__** [insert 30HO,40HO,50HO,60HO,70HO,80HO, 90HO,100HO, 110HO, 120HO] 5 to 13.2 kW electrically heated, double door, three-wide roll-in rack unit with: quick responding air-wash heat / humidity system; high capacity high output refrigeration system including solenoid valve(s), expansion valve(s), line dryer(s) and epoxy coated evaporator coils; modular foam insulated cam lock panel construction; all 300 series stainless steel interior, with protective cart bumpers; heavy-duty door with magnetic seal/mechanical closure system and full width protective bar handle; simple computerized controls, door mounted at eye-level, with accurate digital temperature, humidity and time readouts; plus all the features listed and options checked.

STANDARD PRODUCT WARRANTY

One-Year Parts and Labor (contiguous US Including Alaska and Hawaii, Canada)

Construction Features

- Heavy duty stainless steel exterior with 300 Series stainless steel interior and aluminized steel top
- Walls Ceilings and doors are foam insulated
- Modular wall and ceiling panels with cam lock construction
- Rapid responding air-wash heat and humidity system
- High capacity refrigeration system with epoxy coated evaporator coils
- 208 or 240 VAC single or 3-phase power, field convertible
- Optional remote condensers
- Refrigeration components compatible with R404A Refrigerant

Performance Features

- Dual purpose, provides both proofing and retarding
- 70 - 120 Degree F proofing range
- 34 - 45 Degree F retarding Range
- 50 - 99% humidity range
- Non-submerged calrod type heaters
- Evaporators sized for high humidity levels, prevents drying
- Refrigeration sized for the rapid pull-down needed for fresh dough
- Interior bumpers protect interior walls from damage
- Lighted interior

Controls Features

- All digital controls mounted in the door at eye-level
- PID Type controls for rapid accurate response without overshoot
- Operate in individual modes or automatic mode
- Digital set Temperature, Humidity, Time
- Real-Time clock
- Installed in the left hand door at eye-level
- Large LED displays

Condenser Sold Separately



Sheet Number LRPR3HO v 05 (rev 10/11)

High-Output Roll-In Retarder Proofer

MODEL: LRPR3 -HO Series

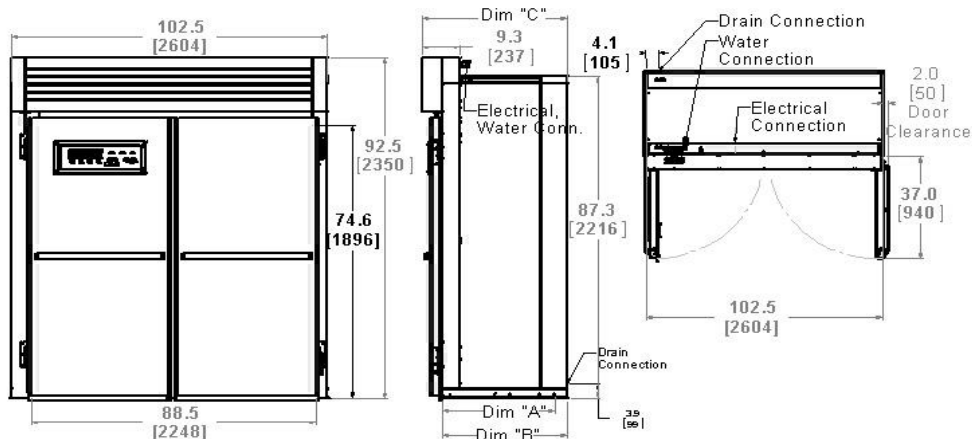
INSTALLATION REQUIREMENT

Ships KD requires on-site installation
 208 or 240 VAC 1 or 3-phase
 Refrigeration system may require installation by a licensed refrigeration technician

1/2" NPT Cold water connection
 3/4" Copper vented drain connection

OPTIONS & ACCESSORIES

Refrigeration Condenser; Stainless Steel Floors



Model	Retarder BTU Rating @ 35 Deg F	Optional Condenser Specs				Depth			Weight		Freight Class
		Part No.	HP	*MCA	*Max Fuse	Internal "A"	Ext. "B"	Over All "C"	Actual	Ship	
LRPR3-30HO	7000	-15	1/2+	8.1	15	26	31	39.3	1172	1472	70
LRPR3-40HO	9000	-18	3/4	8.8	15	36.1	41.1	49.4	1282	1582	70
LRPR3-50HO	9000	-18	3/4	8.8	15	46.1	51.1	59.4	1422	1722	70
LRPR3-60HO	11,000	-01	1	12.5	20	56.1	61.1	69.4	1532	1832	70
LRPR3-70HO	11,000	-01	1	12.5	20	66.2	71.2	79.5	1642	1942	70
LRPR3-80HO	15,000	-34	2	15.9	20	76.2	81.2	89.5	1982	2282	70
LRPR3-90HO	15,000	-34	2	15.9	20	87.1	91	99.3	2269	2569	70
LRPR3-100HO	15,000	-34	2	15.9	20	97.1	101	109.3	2379	2679	70
LRPR3-110HO	19,000	-24	2.25	17.8	25	107.1	111	119.3	2619	2919	70
LRPR3-120HO	19,000	-24	2.25	17.8	25	117.1	121	129.3	2729	3029	70

Total Electrical Requirements By Model

Model	Voltage	Total kW	*MCA		*Max Fuse		Water	Drain
			1-Ph	3-Ph	1-Ph	3-Ph		
LRPR3-(30HO-80HO)	208 VAC	5	30	18	50	50	1/2" NPT .07 GPM @ 60 PSI	1/2"PVC; 210 F; <1 GPM Max.
	240 VAC	6.6	34	20	50	50		
LRPR3-(90HO-120HO)	208 VAC	10.2	NA	35	NA	60	1/2" NPT .14 GPM @ 60 PSI	1/2"PVC; 210 F; <1 GPM Max.
	240 VAC	13.2	NA	39	NA	60		

This Appliance is designed to operate at normal room temperatures; if installed next to an oven or other heat source allow a minimum clearance of 4" to prevent heat transfer. Clearance from combustibles is 0.0" sides and back, For Install on non-porous surfaces only

***MCA: Minimum Circuit Ampacity. *Max Fuse: Maximum allowable circuit protector. *Note: Optional Condenser requires separate electrical supply**

IMPORTANT: Your local water conditions may damage your LBC appliance. Failure to properly treat water may result in damage and may void your warranty. Ensure that your water supply meets these minimum water quality specification.

Parameter	Unit	Value
Alkalinity	ppm	22
Aluminium	ppb	17
Calcium	ppm	3.3
Free Chlorine Residual	ppm	0.6

Parameter	Unit	Value
Magnesium	ppm	0.65
pH	s.u.	8.5
Sodium	ppm	8.5
Total Hardness	ppm	11.9